

log-EZ

How hot is it in the storage room?

What's the humidity in the cellar?

No need to run around...

Get in the know, Now...from your PC.

Compact, Easy-to-Use and Inexpensive!



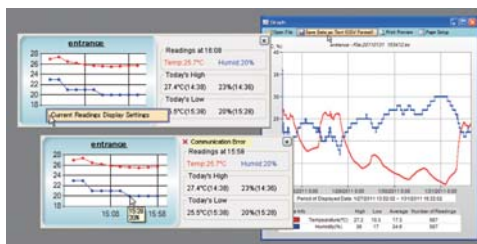
■ Easy Wireless Communication



Download recorded temperature and humidity data from the log-EZ to your PC via wireless communication.

- No need to gather the log-EZ units to check or collect data.
- Download recorded data automatically from the log-EZ to your PC at a set time of day.

■ Easy Checking of Data



View current readings and previously recorded data in graph form.

- Monitor current readings and highest / lowest readings on PC.
- View recorded data in graph, print out, and save as text.

■ Easy to Add New Units

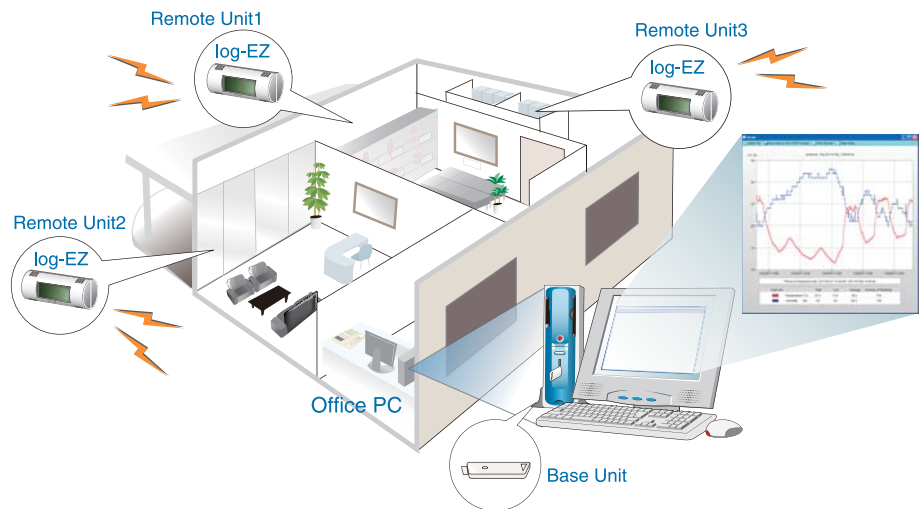


Temperature and humidity monitoring and management across multiple rooms in a house with up to 16 log-EZ units.

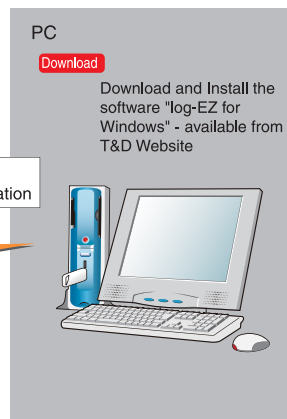
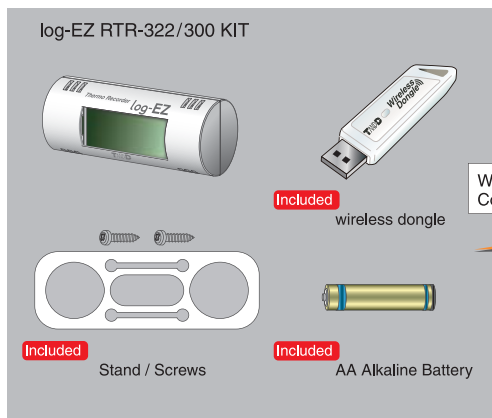
- Possible to manage a total of 16 log-EZ units with one computer to which the Wireless Dongle is connected.
- A log-EZ can not only measure and record data but also relay the data recorded by other log-EZ units, expanding the wireless communication range.

Application Examples

The user-friendly log-EZ can be easily used to measure and record temperature and humidity in various places such as homes and office buildings. It is possible to manage data recorded by multiple log-EZ units, that are placed in distant rooms, via one computer. Also, wireless communication makes data transmission easy and simple with no need for cables or gathering the log-EZ units to collect data.

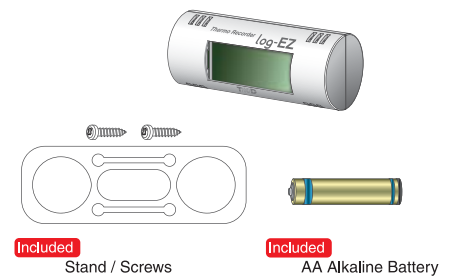


Components



Additional Remote Unit

Single log-EZ (RTR-322)
* Can also be used as a Repeater.



Spec

Number of Channels	Temperature (1ch)	Humidity (1ch)
Measurement Range	0 to 50°C	15 to 90%RH
Display Resolution	0.1°C	1%
Accuracy	±0.5°C (0 to 50°C)	±5%RH (At 25°C 50%RH)
Recording Interval	10 min. (Fixed)	
Logging Capacity *1	1,440 data sets (One data set consists of readings for temperature and humidity.)	
Recording Mode	Overwrite the oldest data when capacity is full	
LCD Display	Measurements (Temperature and Humidity: alternating display)	
Communication Method	Wireless Communication (internal antenna) between "log-ez" (RTR-322) and "Dongle" (RTR-300)	
Dimensions	Tubular Shape Dia 36mm × L85mm	
Weight	About 62g (including AA Alkaline Battery)	
Power	AA Alkaline Battery × 1	
Battery Life	About 6 months *2	
Radio Standard Specifications	FCC Part15 Section247 / IC RSS-210 / ETSI EN 300 440-2 (Frequency Range: 2433 to 2482MHz) *3	
Wireless Communication Range	About 50 meters [160ft] (if unobstructed and direct)	
Operating Environment	Temperature: 0 to 50°C *4 Humidity: 90%RH or less (without condensation)	
Compatible OS with Software	Microsoft® Windows® 7 32bit / 64bit English Microsoft® Windows Vista® 32bit English Microsoft® Windows® XP 32bit (SP2 or above) English	

*1 Logging Capacity is the amount of data which can be logged in the unit; when the capacity is full, the oldest data is overwritten and recording continues. In order to store data continually, a PC is needed to receive data.

*2 Battery life varies depending upon measuring environment, frequency of communication, and battery performance. (Example: If used at an interval of 1 min. to collect current readings, battery life expectancy is about 1.5 months.)

*3 This Unit is not for use with a wireless LAN.

*4 In environments where the temperature exceeds or falls below this range, there may be occasions when the recorded data is lost.

The specifications listed above are subject to change without notice.

Options

Wireless Dongle: RTR-300

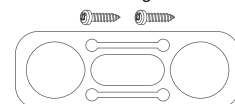
Place between a Base Unit and a Remote Unit to use as a Repeater.



* When using as a Repeater, the optional AC adaptor is needed.

Stand / Screws: AT-32K1

Use the stand to place the log-EZ on a flat surface or with the screws hang on a wall.



TANDD T&D CORPORATION

<http://www.tandd.com/>

Shimadachi 817-1, Matsumoto, Nagano 390-0852 Japan
Facsimile: +81-263-40-3152 E-MAIL: sales@tandd.com